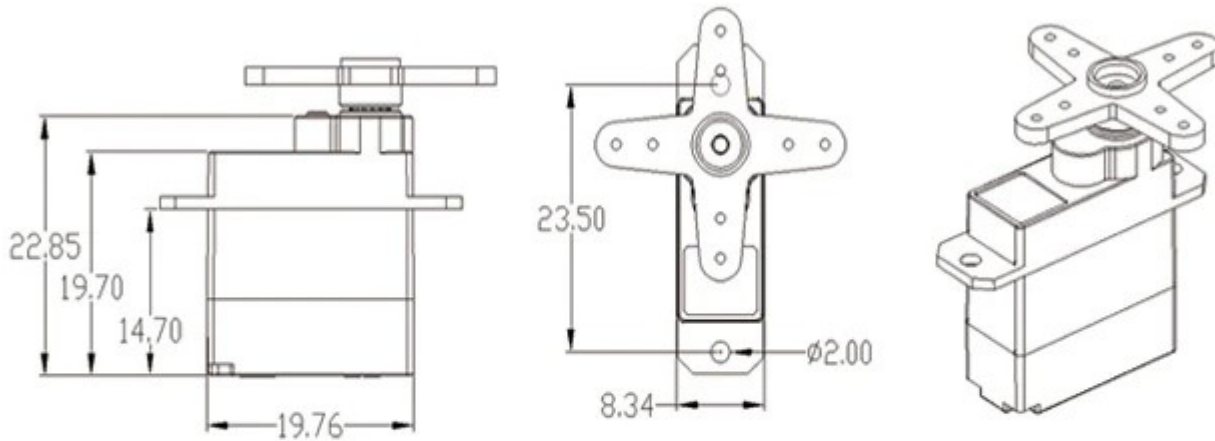
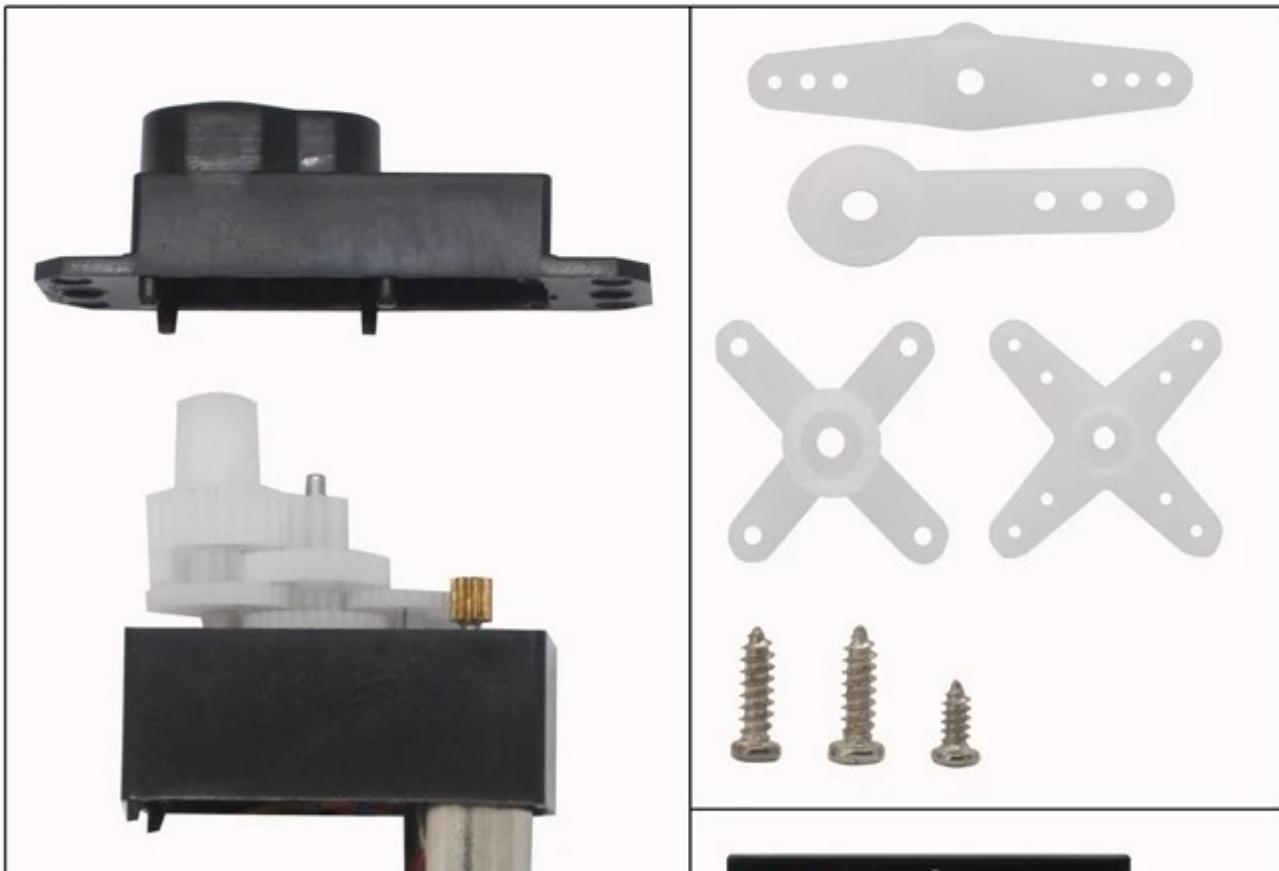


## SERVO 4.3g(ES9051) SERIES

### SERVO 4.3g (ES9051) SPECIFICATIONS

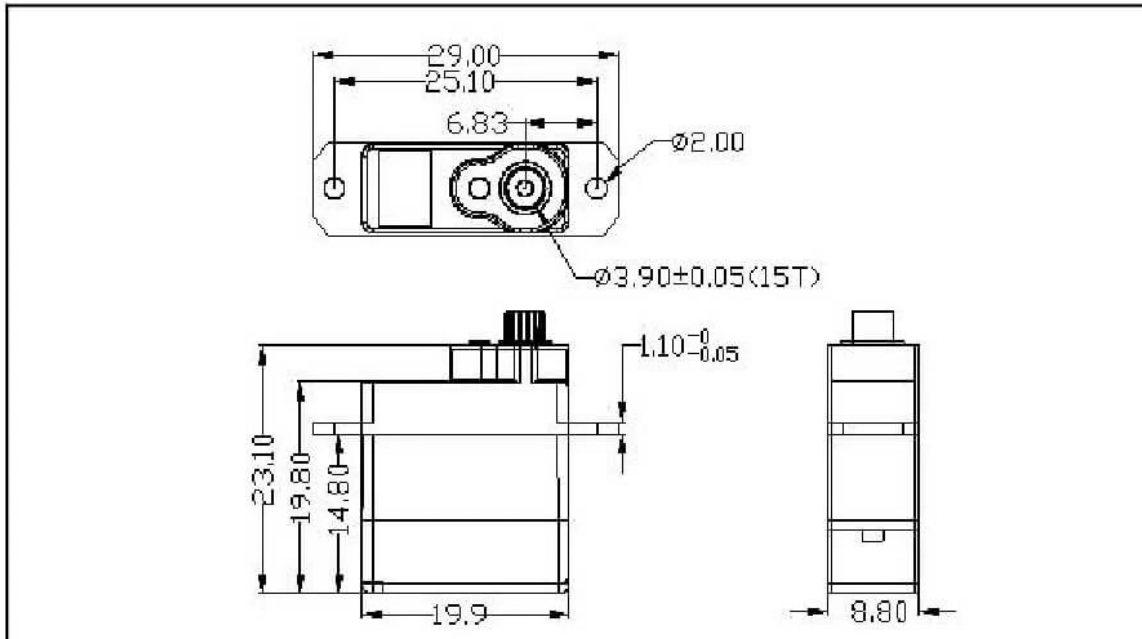


<b>Type:</b>		<b>Digital Servo</b>
<b>Gears:</b>		<b>Plastics</b>
<b>Operating Voltage:</b>		<b>4.0~5.5V</b>
<b>STD Direction:</b>		<b>Counter Clockwise / Pulse Traveling 1500 to 1900usec</b>
<b>Torque:</b>	<b>4.8V</b>	<b>0.8 Kgf.cm</b>
<b>Speed:</b>	<b>4.8V</b>	<b>0.09 Sec/60° at no load</b>
<b>Dimensions:</b>		<b>19.74X8.34X23.25 mm</b>
<b>Weight:</b>		<b>4.1 g</b>
<b>Plug Available</b>		<b>FUT ;JR</b>



## SERVO 4.3g(ES9051 II) SERIES

### SERVO 4.3g (ES9051 II) SPECIFICATIONS



Operating Voltage:		3.6~6.0V
STD Direction:		Counter Clockwise / Pulse Traveling 1500 to 1900usec
Stall Torque:	4.8V	0.85Kgf.cm
Operating Speed:	4.8V	0.07 Sec/60° at no load
Stall Torque:	6.0V	1.0Kgf.cm
Operating Speed:	6.0V	0.06 Sec/60° at no load
Size:		19.90X8.80X23.10mm
Weight:		4.8 g
Plug Available		FUT ;JR
Othere		Digital

2018/11/6

Related Products    Viewed Products

